



## HAWTHORN

Elegant traditional 4 bedroom 2 storey with generous size rooms on a very sought after location in Laurel Creek Village. Huge covered front porch. Family room with columns open to dinette with vaulted ceilings. Maple kitchen with pantry and island. Luxurious whirlpool ensuite.

Superb quality and extras by Savic Homes.

### Room Sizes:

Bedroom:4

Bathroom:3

Living Room/Dining Room: 14 ft x 24 ft

Family room: 15 ft, 6 in x 12 ft, 6 in

Kitchen: 13 ft x 9 ft, 6 in

Dinette: 12 ft, 6 in x 9 ft, 6 in

Master bedroom: 14 ft x 13 ft

Bedroom: 10 ft, 6 in x 11 ft, 4 in

Bedroom: 11 ft x 11 ft, 6 in

Bedroom: 11 ft x 14 ft, 8 in

Laundry room: 6 ft x 5 ft

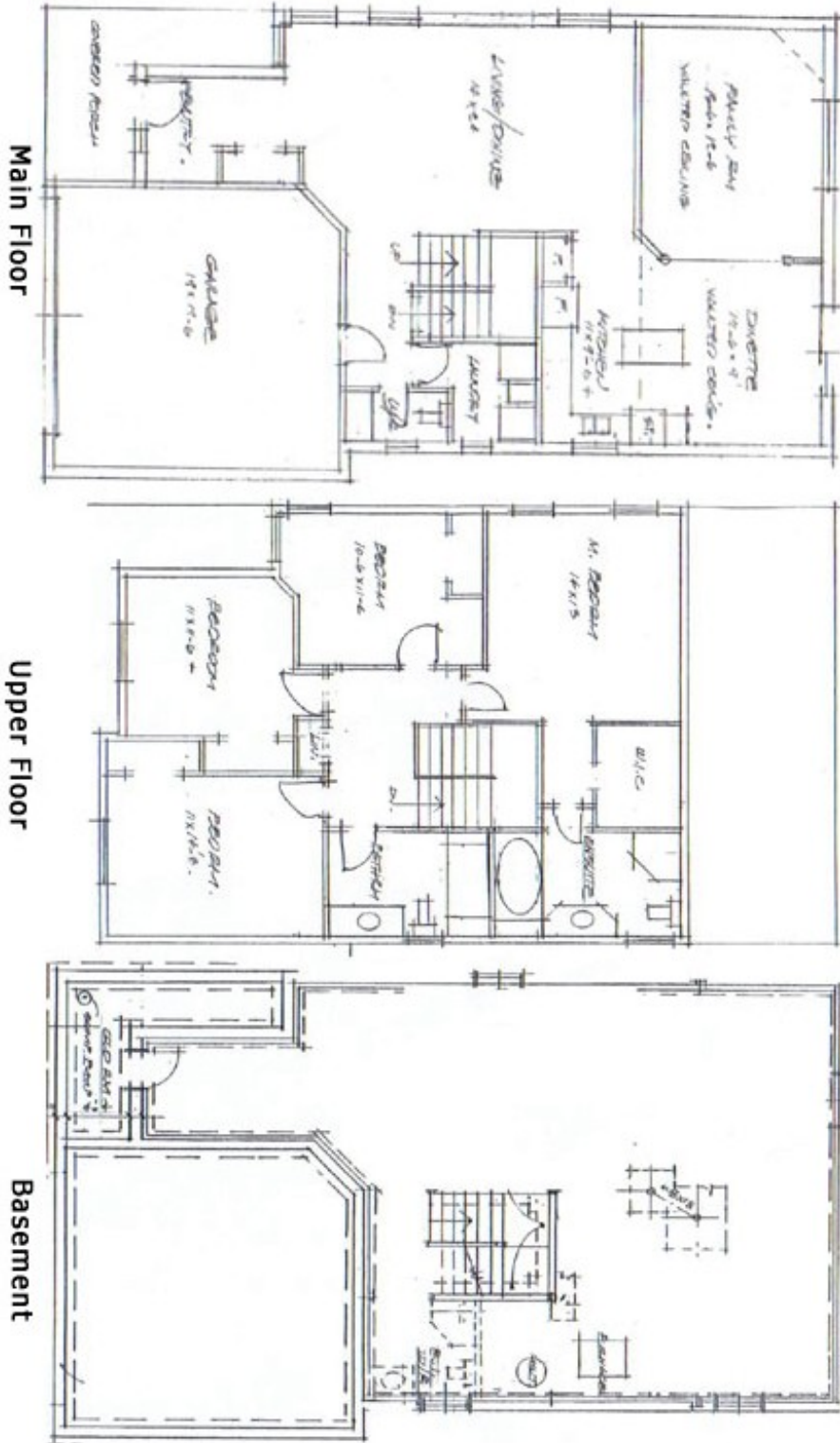


Chetram & Jean Ramautor  
Royal LePage Scharf Realty  
(Sales Representatives)

Direct Line: 519-572-5885 Cell Phone: 519-574-3020

Email: [house@savichomes.com](mailto:house@savichomes.com)

**Floor Plans: Hawthorn**



Specifications and plans are subject to change without notice. E. & O.E.  
 Actual usable floor space may vary from stated floor area.  
 Illustrations depicted are an artist concept of the completed building only.  
 Illustrations may show optional features which may not be included in the base price.